

Discharge Measurement Summary

Site name ECanal3
Site number 02
Operator(s) TMiller
File name EastCanal_20230412_1331.ft
Comment

Start time	4/12/2023 1:31 PM	Sensor type	Top Setting
End time	4/12/2023 2:06 PM	Handheld serial number	FT2H2219029
Start location latitude	42.809	Probe serial number	FT2P2219014
Start location longitude	-118.869	Probe firmware	1.30
Calculations engine	FlowTracker2	Handheld software	1.7

# Stations	Avg interval (s)	Total discharge (m³/s)
20	40	0.6486

Total width (m)	Total area (m²)	Wetted Perimeter (m)
3.597	1.37850	4.028

Mean SNR (dB)	Mean depth (m)	Mean velocity (m/s)
45	0.383	0.4705

Mean temp (°C)	Max depth (m)	Max velocity (m/s)
4.194	0.457	0.6565

Discharge Uncertainty		
Category	ISO	IVE
Accuracy	1.0%	1.0%
Depth	0.1%	1.9%
Velocity	0.7%	2.4%
Width	0.1%	0.1%
Method	2.0%	
# Stations	2.5%	
Overall	3.4%	3.2%

Discharge equation	Mid Section
Discharge uncertainty	IVE
Discharge reference	Rated

Data Collection Settings	
Salinity	0.000 PSS-78
Temperature	-
Sound speed	-
Mounting correction	0.000 %

Summary overview

No changes were made to this file
Quality control warnings



Discharge Measurement Summary

Site name ECanal3
Site number 02
Operator(s) TMiller
File name EastCanal_20230412_1331.ft
Comment

Station Warning Settings

Station discharge OK

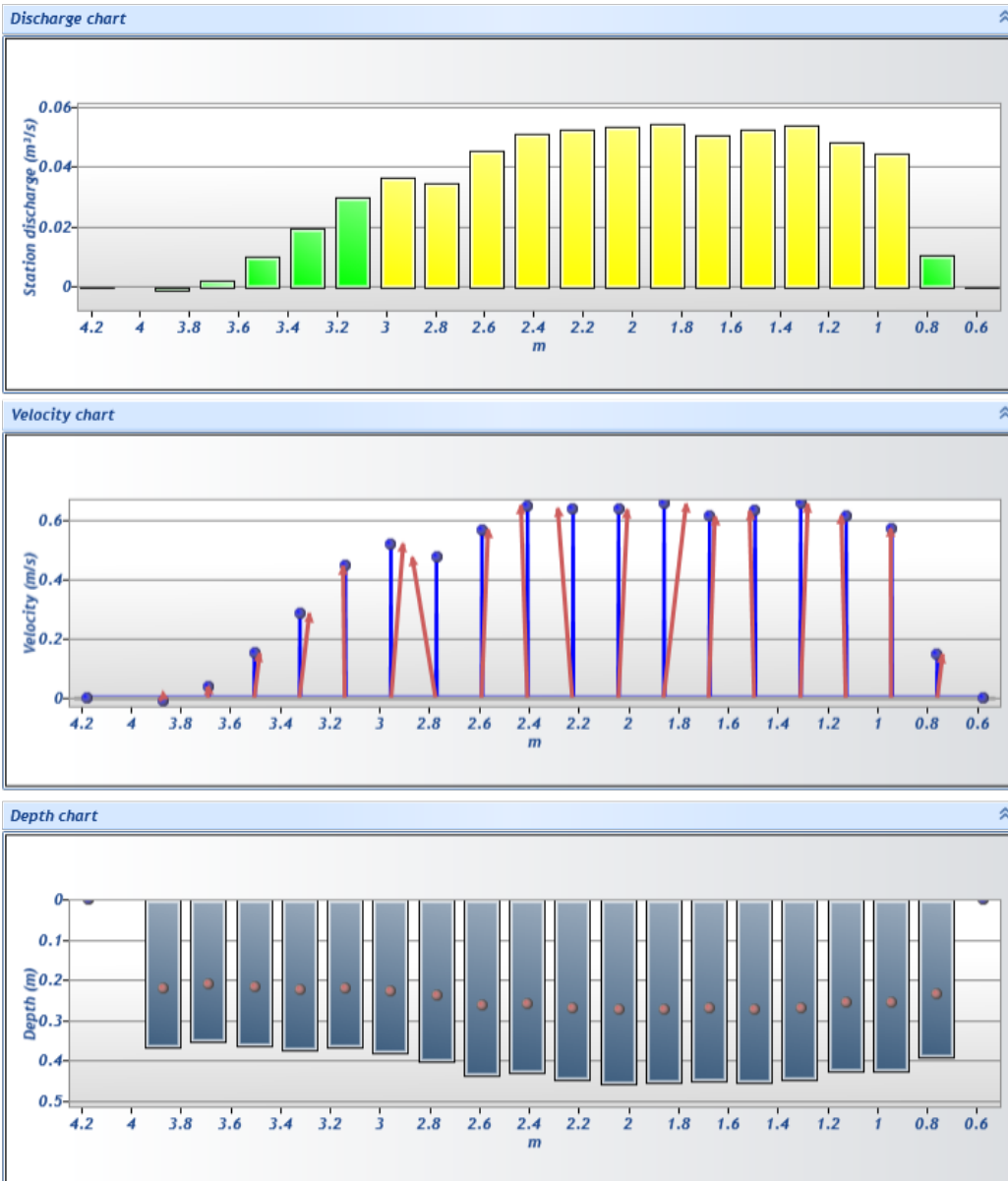
Station discharge < 5.00%

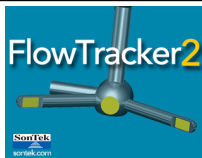
Station discharge caution

5.00% >= Station discharge < 10.00%

Station discharge warning

Station discharge >= 10.00%



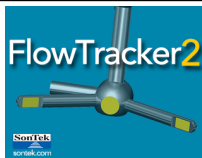


Discharge Measurement Summary

Site name ECanal3
Site number 02
Operator(s) TMiller
File name EastCanal_20230412_1331.ft
Comment

Measurement results

St#	Time	Location (m)	Method	Depth (m)	%Depth	Measured Depth (m)	Samples	Velocity (m/s)	Correction	Mean Velocity (m/s)	Area (m ²)	Flow (m ³ /s)	%Q	
0	1:31 PM	0.579	None	0.000	0.0000	0.000	0	0.0000	1.0000	0.1477	0.00000	0.0000	0.00	✓
1	1:31 PM	0.762	0.6	0.390	0.6000	0.234	80	0.1477	1.0000	0.1477	0.07135	0.0105	1.63	✓
2	1:33 PM	0.945	0.6	0.424	0.6000	0.254	80	0.5721	1.0000	0.5721	0.07748	0.0443	6.83	✓
3	1:35 PM	1.128	0.6	0.427	0.6000	0.256	80	0.6160	1.0000	0.6160	0.07804	0.0481	7.41	✓
4	1:36 PM	1.311	0.6	0.448	0.6000	0.269	80	0.6565	1.0000	0.6565	0.08194	0.0538	8.29	✓
5	1:38 PM	1.494	0.6	0.454	0.6000	0.272	80	0.6328	1.0000	0.6328	0.08306	0.0526	8.10	✓
6	1:39 PM	1.676	0.6	0.451	0.6000	0.271	80	0.6134	1.0000	0.6134	0.08250	0.0506	7.80	✓
7	1:41 PM	1.859	0.6	0.454	0.6000	0.272	80	0.6559	1.0000	0.6559	0.08306	0.0545	8.40	✓
8	1:42 PM	2.042	0.6	0.457	0.6000	0.274	80	0.6370	1.0000	0.6370	0.08361	0.0533	8.21	✓
9	1:44 PM	2.225	0.6	0.448	0.6000	0.269	80	0.6407	1.0000	0.6407	0.08194	0.0525	8.09	✓
10	1:46 PM	2.408	0.6	0.430	0.6000	0.258	80	0.6508	1.0000	0.6508	0.07860	0.0511	7.89	✓
11	1:48 PM	2.591	0.6	0.436	0.6000	0.262	80	0.5697	1.0000	0.5697	0.07971	0.0454	7.00	✓
12	1:50 PM	2.774	0.6	0.399	0.6000	0.240	80	0.4751	1.0000	0.4751	0.07302	0.0347	5.35	✓
13	1:52 PM	2.957	0.6	0.381	0.6000	0.229	80	0.5208	1.0000	0.5208	0.06968	0.0363	5.60	✓
14	1:54 PM	3.139	0.6	0.366	0.6000	0.219	80	0.4471	1.0000	0.4471	0.06689	0.0299	4.61	✓
15	1:56 PM	3.322	0.6	0.372	0.6000	0.223	80	0.2862	1.0000	0.2862	0.06801	0.0195	3.00	✓
16	1:58 PM	3.505	0.6	0.363	0.6000	0.218	80	0.1508	1.0000	0.1508	0.06633	0.0100	1.54	✓
17	2:01 PM	3.688	0.6	0.351	0.6000	0.210	80	0.0383	1.0000	0.0383	0.06410	0.0025	0.38	✓
18	2:05 PM	3.871	0.6	0.366	0.6000	0.219	80	-0.0103	1.0000	-0.0103	0.08919	-0.0009	-0.14	✓
19	2:06 PM	4.176	None	0.000	0.0000	0.000	0	0.0000		-0.0103	0.00000	0.0000	0.00	✓

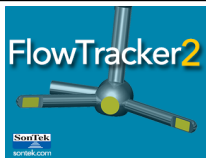


Discharge Measurement Summary

Site name ECanal3
Site number 02
Operator(s) TMiller
File name EastCanal_20230412_1331.ft
Comment

Quality Control Settings	
Maximum depth change	50.00%
Maximum spacing change	100.00%
SNR threshold	10 dB
Standard error threshold	0.0100 m/s
Spike threshold	10.00%
Maximum velocity angle	20.0 deg
Maximum tilt angle	5.0 deg

Quality control warnings							
St#	Time	Location (m)	Method	Depth (m)	%Depth	Measured Depth (m)	Warnings
1	1:31 PM	0.762	0.6	0.390	0.6000	0.234	Standard Error > QC
2	1:33 PM	0.945	0.6	0.424	0.6000	0.254	Standard Error > QC
3	1:35 PM	1.128	0.6	0.427	0.6000	0.256	Standard Error > QC
4	1:36 PM	1.311	0.6	0.448	0.6000	0.269	Standard Error > QC
5	1:38 PM	1.494	0.6	0.454	0.6000	0.272	Standard Error > QC
6	1:39 PM	1.676	0.6	0.451	0.6000	0.271	Standard Error > QC
7	1:41 PM	1.859	0.6	0.454	0.6000	0.272	Standard Error > QC
8	1:42 PM	2.042	0.6	0.457	0.6000	0.274	Standard Error > QC
9	1:44 PM	2.225	0.6	0.448	0.6000	0.269	Standard Error > QC
10	1:46 PM	2.408	0.6	0.430	0.6000	0.258	Standard Error > QC
11	1:48 PM	2.591	0.6	0.436	0.6000	0.262	Standard Error > QC
12	1:50 PM	2.774	0.6	0.399	0.6000	0.240	Standard Error > QC
13	1:52 PM	2.957	0.6	0.381	0.6000	0.229	Standard Error > QC
14	1:54 PM	3.139	0.6	0.366	0.6000	0.219	Standard Error > QC
19	2:06 PM	4.176	None	0.000	0.0000	0.000	Water Depth > QC



Discharge Measurement Summary

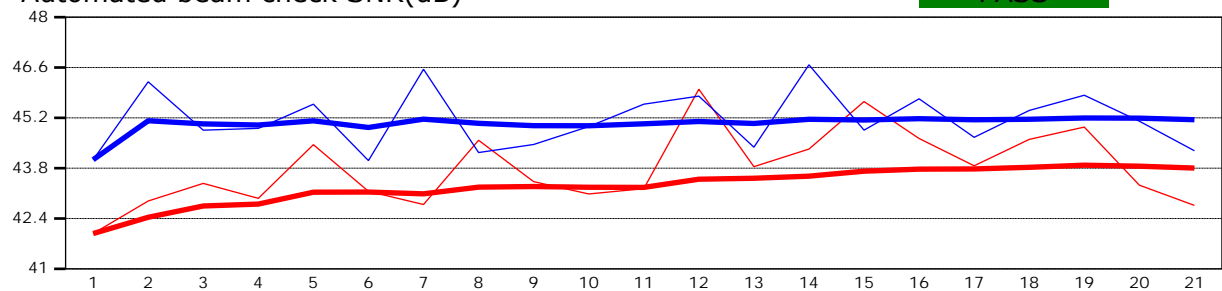
Site name ECanal3
Site number 02
Operator(s) TMiller
File name EastCanal_20230412_1331.ft
Comment

Beam 1	
Beam 2	

Automated beam check Start time 4/12/2023 1:30:37 PM

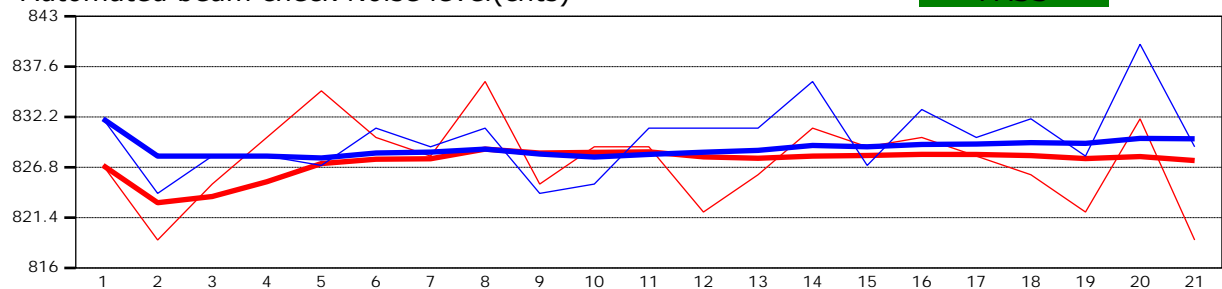
Automated beam check SNR(dB)

PASS



Automated beam check Noise level(cnts)

PASS



Automated beam check Quality control warnings

No quality control warnings



Discharge Measurement Summary

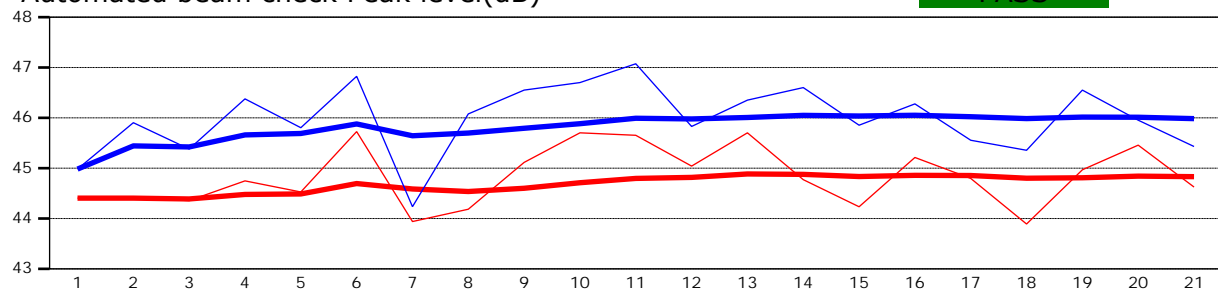
Site name ECanal3
Site number 02
Operator(s) TMiller
File name EastCanal_20230412_1331.ft
Comment

Beam 1	
Beam 2	

Automated beam check Start time 4/12/2023 1:30:37 PM

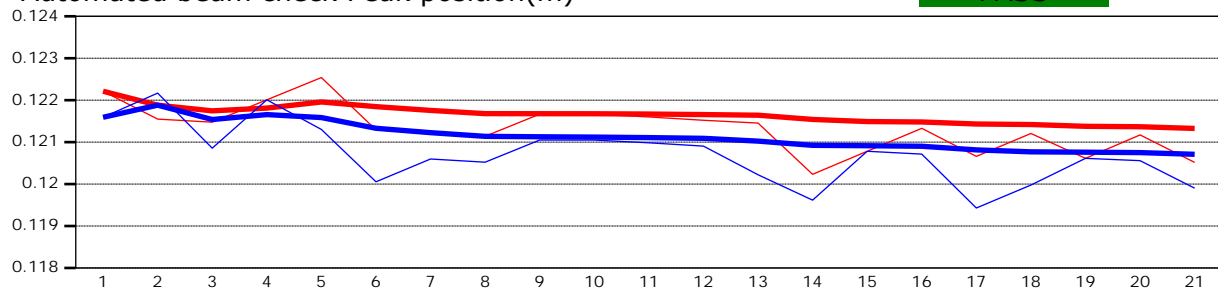
Automated beam check Peak level(dB)

PASS



Automated beam check Peak position(m)

PASS



Automated beam check Quality control warnings

No quality control warnings